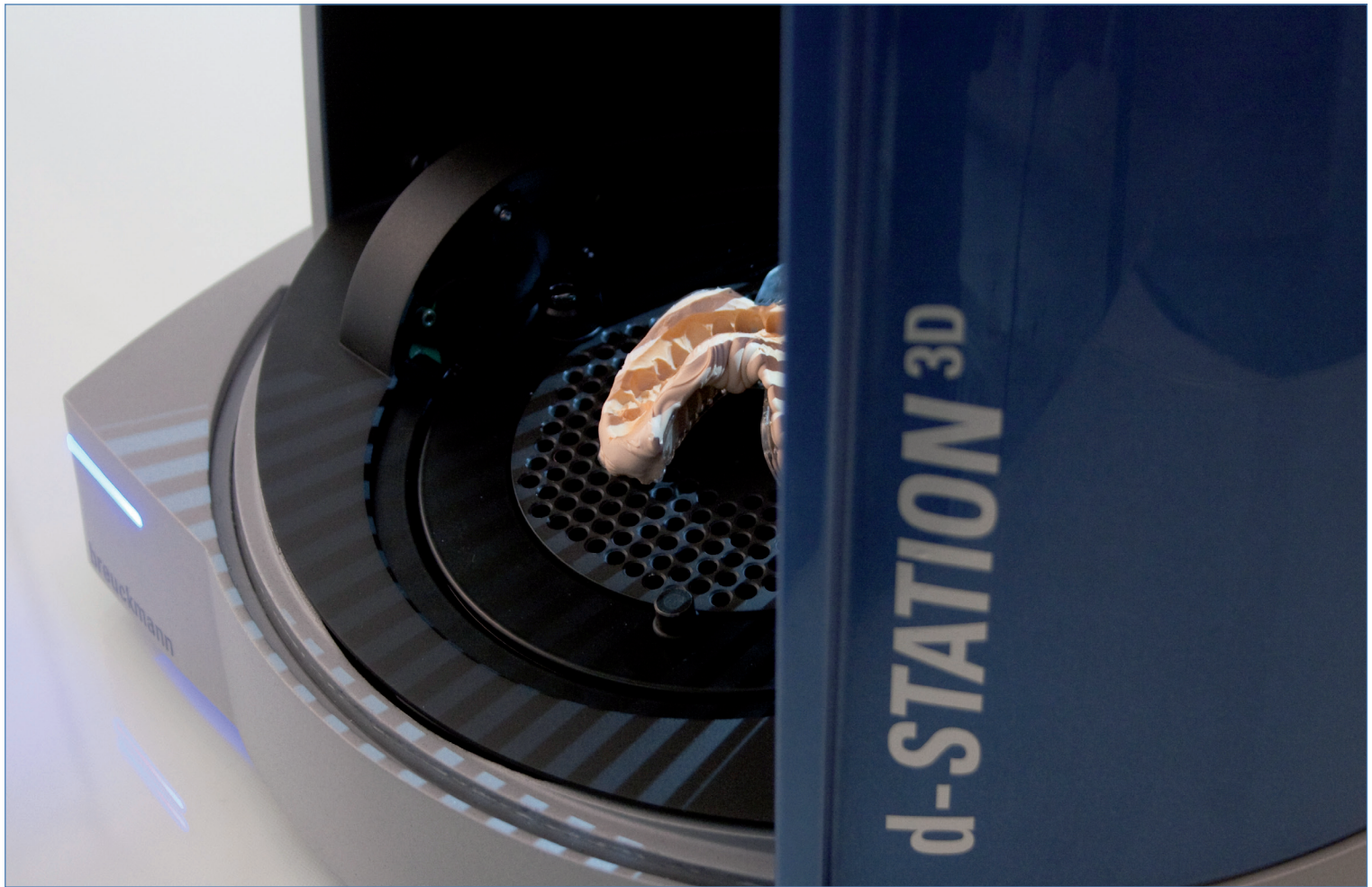


d-STATION^{3D}

AUTOMATED 3D DIGITIZATION OF SMALL OBJECTS



Mission and Application

Breuckmann scanning systems are among first choice when it comes to the exact, authentic and fast three-dimensional capturing of models for the production of individual, precisely fitting dental constructions such as crowns, bridges, inlays or onlays. With over 700 systems in operation worldwide, Breuckmann is a renowned and experienced partner in the field of dental CAD/CAM applications.

Thanks to the well-proven miniaturized projection technique, the new **d-STATION^{3D}** scanner generation provides the high-resolution acquisition of 3D data which characterises all Breuckmann systems. With its new, sleek and modern design, the system offers the optimal solution with regard to cost-benefit ratio.

Following its considerable success, the **d-STATION^{3D}** has also been adapted and optimised for applications reaching far beyond its original dental technology related focus, to the automated digitization of any kinds of small objects. Further applications are increasingly found in the scientific, medical and technical area as well as in a range of small sized consumer goods, e.g. jewellery.

Given its integrated concept of object positioning and 3D scanning hardware assembled in a closed system housing, the **d-STATION^{3D}** is resistant to all environmental interferences such as vibration, light, dust etc. and thereby ensures easy, error-free handling with high-quality results.

d-STATION^{3D}

AUTOMATED 3D DIGITIZATION OF SMALL OBJECTS



MULTIPLE APPLICATION AREAS

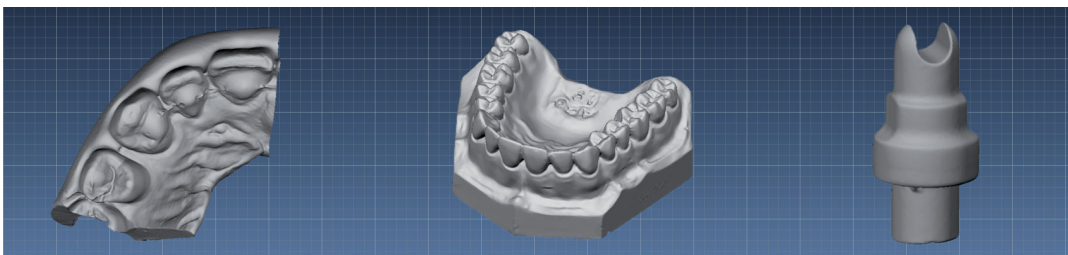
- ▶ Dental impressions, deep inlays
- ▶ 16-unit bridges, aligned preparation models
- ▶ Dental parts and structures for implant technology
- ▶ Analysis of masticatory surfaces
- ▶ Ear impressions
- ▶ Plastic parts
- ▶ Jewellery and gemstones
- ▶ Coins or archaeological findings
- ▶ Small articles of any kind, up to a maximum weight of 2 kg

HIGH-PERFORMANCE FEATURES

- ▶ Breuckmann-patented miniature projection technique with Gray Code and Phaseshift sequence
- ▶ Low-maintenance and economical thanks to robust construction and protected sensor hardware
- ▶ Compact and modern design
- ▶ Efficient scanning at high-detail level and accuracy
- ▶ Non-sensitive to thermal influence through use of long-life LED technology
- ▶ Convenient adjustment of scanning objects with flexible fixing tools
- ▶ Freely positionable double axis turn-/ tilt unit for acquisition of complex object geometries
- ▶ Fully automated scan process without need for user intervention

SOFTWARE FEATURES

- ▶ Automatic referencing of the positioning unit
- ▶ Intuitive, user-friendly software interface for the data acquisition and 3D calculation
- ▶ Optimal alignment by using best-fit approximation
- ▶ Scanned models are automatically merged and saved into STL files
- ▶ STL data processable by third-party CAD software or inspection tools



Breuckmann GmbH

Industrial 3D Image Processing and Automation
Torenstraße 14 • D-88709 Meersburg

Tel.: +49 (0) 75 32 • 43 46 - 0

Fax: +49 (0) 75 32 • 43 46 - 50

Email: info@breuckmann.com

Web: www.breuckmann.com